

**DOCUMENT 00 90 00  
ADDENDUM**

**ADDENDUM NO. [2]                      Date: March 25, 2021**

**RE:                      WITC – SHELL LAKE CAMPUS  
HEALTH EDUCATION CENTER  
505 PINE RIDGE DR  
SHELL LAKE, WI 54871  
HSR PROJECT NO. 20022-1**

**FROM:                  HSR Associates, Inc  
100 Milwaukee Street  
La Crosse, WI 54603  
(608) 784-1830**

**To:    Prospective Bidders**

This addendum forms a part of the Contract Documents and modifies the original Bidding Documents dated March 2021. Acknowledge receipt of this Addendum in the space provided on the bid form. Failure to do so may subject the Bidder to disqualification.

This Addendum consists of [2] pages and [3] 30 x 42 drawings.

**GENERAL REQUIREMENTS:**

1. Section 01 10 00 SUMMARY

- a. 1.10: Add the following adjustment to Substantial Completion;  
Exterior concrete and asphalt work completed by September 30, 2021. Final Turf Restoration by October 8, 2021.  
If grass is not fully established and acceptable prior to winter freeze up in 2021, re-visit the project the week of June 1, 2022 to inspect the site conditions with the Owner/Architect/Engineer to review the status of the re-vegetation effort at the site. If area(s) are determined to need additional restoration effort in early summer of 2022, that work will be completed as a warranty work item, allowing the project to be closed out in 2021.

**CHANGES TO SPECIFICATIONS:**

2. Section 08 71 00 DOOR HARDWARE

- a. 3.04: Hardware Group 4. The lockset for this door shall be locked from Hallway 100C side to prevent entrance into Hallway 100C

**CHANGES TO DRAWINGS**

- 3. Sheet E001 ELECTRICAL NOTES, LEGENDS AND ABBREVIATIONS 30 x 42 attached hereto
  - a. Revisions clouded on Drawing.
  - b. Remove General Electrical note #20.
  - c. Revise responsibility matrix.

4. Sheet E131 FIRST FLOOR SYSTEMS PLAN 30 x 42 attached hereto
  - a. Revisions clouded on Drawing.
  - b. Add view "THRU FLOOR COORDINATION".
  - c. Add notation that existing fire alarm system is Simplex.
  
5. Sheet E133 BLUE LIGHT ALERT SYSTEM 30 x 42 attached hereto
  - a. Revisions clouded on Drawing.
  - b. Remove Atertus System.

**PRIOR APPROVALS**

1. Section 08 42 43 INTENSIVE CARE UNIT / CRITICAL CARE UNIT ENTRANCES:
  - a. Tormax: TX9600TL ICU/CCU Manual Sliding Door

**END OF DOCUMENT 00 90 00**



**HSR ASSOCIATES INC.**  
100 MILWAUKEE STREET  
LA CROSSE, WISCONSIN  
PHONE: 608.784.1830  
FAX: 608.782.5844  
www.hsrassociates.com

Consultant:



MEP PROJECT# H08.20.02

WITC - SHELL LAKE CAMPUS  
HEALTH EDUCATION CENTER  
505 PINE RIDGE DR  
SHELL LAKE, WI  
ELECTRICAL NOTES, LEGENDS & ABBREVIATIONS

Project Title: \_\_\_\_\_  
Project Location: \_\_\_\_\_  
Sheet Title: \_\_\_\_\_

HSR Project Number: **20022-1**

Project Date: **MARCH 4, 2021**

Drawn By: **CJS / LA**

Key Plan: \_\_\_\_\_

**BID DRAWINGS**

No.	Description	Date
A02	ADD #2	03/25/21

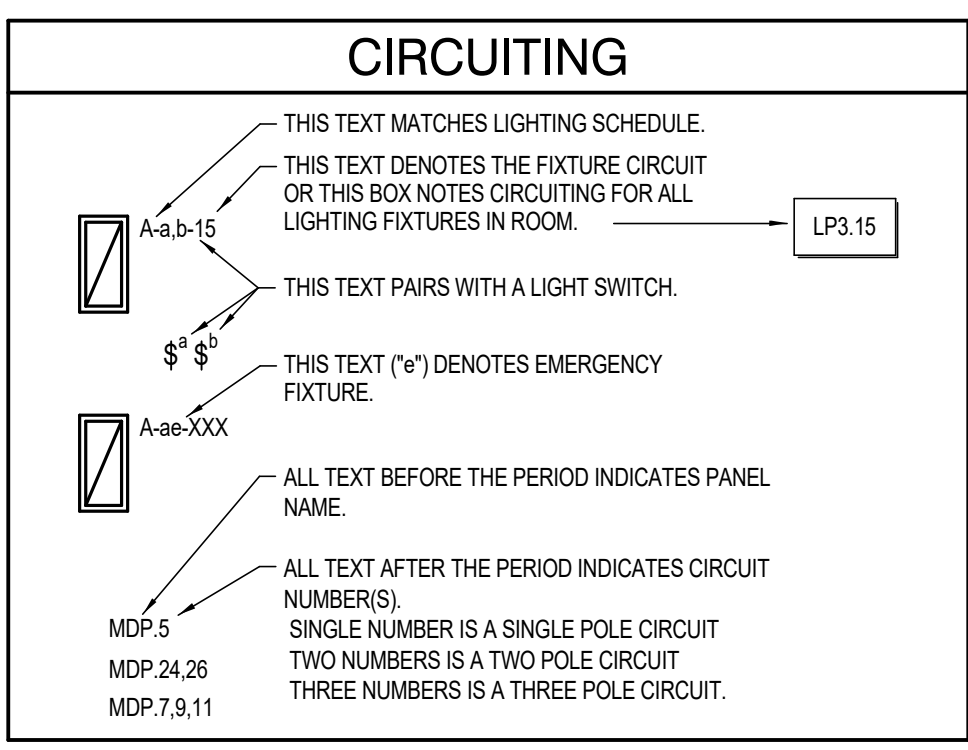
Graphic Scale: **VARIES**

Last Update: **3/24/2021 7:26:31 AM**

**E001**

SYMBOL LEGEND	
	LIGHT SOLID LINES = EXISTING DEVICE(S) TO REMAIN
	HEAVY, DASHED LINES = EXISTING DEVICE(S) TO BE REMOVED
	HEAVY, SOLID LINES = NEW DEVICE(S) TO BE INSTALLED
	DETAIL NUMBER
	SHEET NUMBER OF DETAIL
	EQUIPMENT ABBREVIATION
	EQUIPMENT NUMBER

ELECTRICAL ABBREVIATIONS			
ALL ABBREVIATIONS MAY OR MAY NOT BE USED			
AC	ABOVE COUNTERTOP	MCA	MINIMUM CIRCUIT AMPS
AFF	ABOVE FINISH FLOOR	MDP	MAIN DISTRIBUTION PANEL
AFG	ABOVE FINISH GRADE	MTD	MOUNTED
ANNC	ANNUNCIATOR	OCC	OCCUPANCY
CC	CONTROLS CONTRACTOR	PC	PLUMBING CONTRACTOR
DPST	DOUBLE POLE SINGLE THROW	PE	PHOTOELECTRIC CELL
EC	ELECTRICAL CONTRACTOR	PNL	PANEL
EM	EMERGENCY	SPST	SINGLE POLE SINGLE THROW
EX	EXISTING	TC	TIME CLOCK
EXR	EXISTING RELOCATED	TCP	TIME CLOCK - PHOTOCELL
GC	GENERAL CONTRACTOR	TVSS	TRANSIENT VOLTAGE SURGE SUPPRESSION
GFCI	GROUND FAULT CIRCUIT INTERRUPT	UNO	UNLESS NOTED OTHERWISE
IBC	INTERNATIONAL BUILDING CODE	WP	WEATHER PROOF
IG	ISOLATED GROUND	20A	20 AMP
HP	HORSEPOWER	Ø	PHASE
LV	LOW VOLTAGE	3W	3 WIRE
MC	MECHANICAL CONTRACTOR	201	20 AMP SINGLE PHASE



OCCUPANCY SENSOR SCHEDULE	
Ⓢ	MULTI-TECHNOLOGY, CEILING MOUNTED OCCUPANCY SENSOR WITH LIGHT LEVEL SENSING AND CAPABLE OF DISABLING THE AUTO ADAPTING FEATURE. PROVIDE WITH RELAY/POWER PACKS AS REQUIRED PER PLAN (LOW VOLTAGE). LEVITON, OSC10M SENSOR SWITCH, #30A-POT-9 WATSTOPPER, DW-100
Ⓢ	MULTI-TECHNOLOGY, CEILING MOUNTED OCCUPANCY SENSOR WITH LIGHT LEVEL SENSING AND CAPABLE OF DISABLING THE AUTO ADAPTING FEATURE. PROVIDE WITH RELAY/POWER PACKS AS REQUIRED PER PLAN (LOW VOLTAGE). LEVITON, OSC20M WATSTOPPER, DW-100
Ⓢ <sup>OC</sup>	MULTI-TECHNOLOGY WALL SINGLE SWITCH SENSOR, PIR AND ULTRASONIC WITH LIGHT LEVEL SENSING. FITS IN SINGLE GANG BOX, SINGLE TRIM RING AND CAPABLE OF DISABLING THE AUTO ADAPTING FEATURE. LEVITON, OSSMT SENSOR SWITCH, WSD-POT WATSTOPPER, DW-100
Ⓢ <sup>OD</sup>	MULTI-TECHNOLOGY WALL SWITCH SENSOR PIR & ULTRASONIC DUAL SWITCHING, DUAL RELAY, LIGHT LEVEL SENSING. FITS IN SINGLE GANG BOX, SINGLE TRIM RING AND CAPABLE OF DISABLING THE AUTO ADAPTING FEATURE. LEVITON, OSSMD SENSOR SWITCH, WSD-POT-2P WATSTOPPER, DW-200 COOPER, ONW-4-101-DMV
GENERAL NOTES: CEILING MOUNTED DEVICES SHALL BE WHITE. WALL MOUNTED DEVICES SHALL BE IVORY TO MATCH MANUAL LIGHTING CONTROL.	

ELECTRICAL SHEET INDEX	
E001	ELECTRICAL NOTES, LEGENDS & ABBREVIATIONS
E011	FIRST FLOOR LIGHTING DEMOLITION PLAN
E012	SECOND FLOOR LIGHTING DEMOLITION PLAN
E0121	FIRST FLOOR POWER & SYSTEMS DEMOLITION PLAN
E0122	SECOND FLOOR POWER AND SYSTEMS DEMOLITION
E101	SITE PLAN
E111	FIRST FLOOR LIGHTING PLAN
E112	SECOND FLOOR LIGHTING PLAN
E121	FIRST FLOOR POWER PLAN
E122	SECOND FLOOR POWER PLAN
E131	FIRST FLOOR SYSTEMS PLAN
E132	SECOND FLOOR SYSTEMS PLAN
E133	BLUE LIGHT ALERT SYSTEM
E501	DETAILS
E502	DETAILS
E601	RISER & PANELBOARDS
E602	PANELBOARD
E603	PANELBOARD

ELECTRICAL SYMBOLS LEGEND	
RECEPTACLES	LIGHTING

GENERAL ELECTRICAL NOTES	
1.	ALL WORK SHALL BE IN CONFORMANCE WITH NATIONAL, STATE, AND LOCAL CODES AND/OR ORDINANCES.
2.	ELECTRICAL CONTRACTOR SHALL COORDINATE WORK WITH ALL OTHER CONTRACTORS & LOCAL AGENCY. E.C. SHALL CONTACT LOCAL UTILITY FOR EXACT SERVICE REQUIREMENTS TO INCLUDE BUT NOT LIMITED TO TRANSFORMER, METERING AND CABLING. LOCAL UTILITY REQUIREMENTS SUPERSEDE DRAWINGS AND SPECIFICATIONS.
3.	SEE ARCHITECTURAL, MECHANICAL, & PLUMBING DRAWINGS FOR ADDITIONAL REQUIREMENTS.
4.	ELECTRICAL DRAWINGS ARE DIAGRAMMATIC ONLY. THEY ARE INTENDED TO GIVE APPROXIMATE LOCATIONS AND OVERALL DESIGN INTENT. THE ELECTRICAL CONTRACTOR SHALL BE RESPONSIBLE FOR PRODUCTS, MATERIALS, AND ELECTRICAL METHODS WHICH HAVE NOT BEEN SHOWN OR INDICATED BUT ARE REQUIRED FOR A COMPLETE SYSTEM TO THE STANDARDS OF THE INDUSTRY.
5.	INSTALL LIGHTING FIXTURES IN ACCORDANCE WITH MANUFACTURER'S RECOMMENDATIONS. PROVIDE SUPPORTING DEVICES FOR ADEQUATE SUPPORT OF FIXTURES FROM STRUCTURE.
6.	UPON COMPLETION OF THE ELECTRICAL WORK, THE INSTALLATION SHALL BE TESTED FOR CONTINUITY, GROUNDS, AND SHORT CIRCUITS. THE ELECTRICAL CONTRACTOR SHALL DEMONSTRATE PROPER PERFORMANCE OF ALL SYSTEMS. ALL DEFECTIVE WORK OR MATERIALS SHALL BE REPLACED OR REPAIRED AS NECESSARY AND RETESTED.
7.	ELECTRICAL RACEWAYS THAT PENETRATE FIRE RATED ASSEMBLIES SHALL BE SLEEVED AND SEALED AS PER THE LOCAL BUILDING CODE.
8.	THE ELECTRICAL CONTRACTOR SHALL PROVIDE A TEMPORARY ELECTRICAL SYSTEM FOR THE PROJECT. AT LEAST ONE 120 VOLT SINGLE PHASE RECEPTACLE SHALL BE PROVIDED FOR EACH 500 SQUARE FEET OF FLOOR SPACE. SUFFICIENT TEMPORARY LIGHTING SHALL BE PROVIDED TO ALLOW ALL CONTRACTORS TO COMPLETE THEIR WORK. TEMPORARY ELECTRICAL CIRCUITS SHALL BE EQUIPPED WITH COMBINATION GROUND FAULT INTERRUPTER AND CIRCUIT BREAKER PER NEC. TEMPORARY ELECTRICAL SYSTEM SHALL BE INCLUDED IN THIS BID. USAGE CHARGES SHALL BE PAID FOR BY THE GENERAL CONTRACTOR.
9.	ELECTRICAL DEVICES/EQUIPMENT SHOWN AS DASHED AND BOLD ARE EXISTING TO BE REMOVED, ELECTRICAL DEVICES/EQUIPMENT SHOWN AS LIGHT AND SOLID ARE EXISTING TO REMAIN, AND ELECTRICAL DEVICES/EQUIPMENT SHOWN AS BOLD AND SOLID SHALL BE NEW.
10.	ELECTRICAL CONTRACTOR SHALL PROVIDE COMMUNICATIONS DEVICES, INCLUDING 4" SQUARE, MINIMUM 2-1/8" DEEP BACKBOX WITH SINGLE GANG MUD RING AND 1" CONDUIT STUBBED INTO ACCESSIBLE CEILING WITH 90 DEGREE BEND INTO THE ROOM AND PLASTIC BUSHING.
11.	PROTECT TELMETRY AND OTHER LOW VOLTAGE CABLE FROM DEMOLITION OPERATIONS. DO NOT DISRUPT WITHOUT WRITTEN OWNER APPROVAL UPON 5 DAY MINIMUM NOTICE.
12.	ELECTRICAL CONTRACTOR SHALL BE RESPONSIBLE FOR ALL ASSOCIATED COSTS AND SCHEDULING OF REQUIRED ELECTRICAL INSPECTIONS.
13.	ALL LOW VOLTAGE CABLING SHALL BE PLENUM RATED.
14.	ALL CIRCUITS SHALL HAVE DEDICATED NEUTRAL CONDUCTOR. THERE SHALL NOT BE THE USE OF SHARED NEUTRALS.
15.	EC SHALL INCLUDE IN BID AN ALLOWANCE FOR OWNER TO ADD (2) RECEPTACLES DURING CONSTRUCTION WALK THROUGH. ASSUME NOT MORE THAN (4) NEW CIRCUITS. CIRCUITS WILL BE RULLED FROM THE NEAREST AVAILABLE NORMAL POWER PANEL. EC SHALL INCLUDE IN BID AN ALLOWANCE FOR (8) ADDITIONAL DATA DROPS FOR CONTINGENCY.
16.	TYPICAL ROOM LAYOUTS SHOWN WILL HAVE SOME DEVIATION FROM ROOM TO ROOM. LAYOUT DEVIATION IS EXPECTED FOR IRREGULAR WALLS OR OTHER CONSIDERATIONS. DEVICE COUNT AND OPERATION SHALL REMAIN.
17.	ELECTRICAL CONTRACTOR SHALL PROVIDE NEW SPEAKERS AS SHOWN ON THE PLANS. CONNECT TO EXISTING PAGING SYSTEM. SPEAKERS SHALL BE BOGEN S9 SERIES PR EQUAL WITH RECESSED VOLUME CONTROL. EC SHALL VERIFY COMPATIBILITY WITH EXISTING SYSTEM.
18.	ALL LIGHTING CONTROLS SHALL BE LITHONIA ALIGHT. SYSTEM SHALL BE CONNECTED TO BUILDING WIDE SYSTEM AND ACCESSIBLE TO OUTSIDE CONTROLS.
19.	EC SHALL PROVIDE NEW CARD READERS ALONG WITH ALL REQUIRED CONNECTIONS AND REQUIRED POWER SUPPLIES.

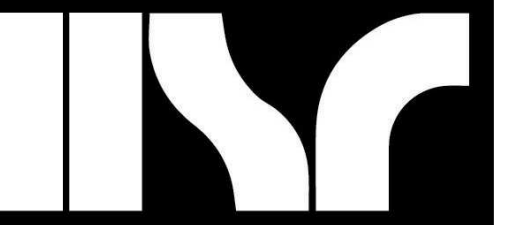
LIGHT FIXTURE SCHEDULE						
TYPE	DESCRIPTION	MANUFACTURER	REFERENCE CATALOG #	LAMPS	VOLTS	
A	2x4 VOLUMETRIC RECESSED, LED, 4000K, 4000 LUMENS, DIM TO 1%	LITHONIA	ZBLT4 40L ADP E21 LP840 N80	LED 4000K 4000 LUMENS 31W	UNV	
AE	SAME AS TYPE A EXCEPT ADD 1400 LUMEN BATTERY PAK					
A2	2x4 VOLUMETRIC RECESSED, LED, 4000K, 6000 LUMENS, DIM TO 1%	LITHONIA	ZBLT4 60L ADP E21 LP840 N80	LED 4000K 6000 LUMENS 48W	UNV	
B	2x2 VOLUMETRIC RECESSED, LED, 4000K, 3300 LUMENS, DIM TO 1%	LITHONIA	ZBLT2 33L ADP E21 LP840 N80	LED 4000K 3300 LUMENS 29W	UNV	
BE	SAME AS TYPE B EXCEPT ADD 1400 LUMEN BATTERY PAK					
C	6" DOWNLIGHT, LED, 4000K, 1500 LUMENS, DIMMING	LITHONIA	LDN6 4015 L06AR LSS MVOLT E21	LED 4000K 1500 LUMENS 21W	UNV	
CE	SAME AS TYPE C EXCEPT ADD BATTERY PAK					
D	VANITY LIGHT, 48" LED, 4000K, 3000 LUMENS, DIMMING	LITHONIA	BLWP4 30L ADP E21 LP840	LED 4000K 3000 LUMENS 25W	UNV	
D2	VANITY LIGHT, 24" LED, 4000K, 3300 LUMENS, DIMMING	LITHONIA	BLWP2 33L ADP E21 LP840	LED 4000K 3300 LUMENS 30W	UNV	
ⓧ	EXIT SIGN, RED LETTERS, BRUSHED ALUMINUM FINISH, BATTERY	LITHONIA	EDGR RMR EL	LED 4W	UNV	
F	2x4 TROFFER, LED, 4000K, 8000 LUMENS, DIM TO 1%	LITHONIA	ZTL4 80L FW A12 EZB LP840 N80	LED 4000K 8000 LUMENS 47W	UNV	
F2	2x4 TROFFER, LED, 4000K, 4800 LUMENS, DIM TO 1%	LITHONIA	ZTL4 48L FW A12 EZ2 LP840 N80	LED 4000K 4800 LUMENS 21W	UNV	
F3	2x2 TROFFER, LED, 4000K, 4000 LUMENS, DIM TO 0.1%	LITHONIA	ZTL2 40L FW A12 EZB LP840 N80	LED 4000K 4000 LUMENS 25W	UNV	
G	1x4 VOLUMETRIC RECESSED, LED, 4000K, 4000 LUMENS, DIM TO 1%	LITHONIA	BLT4 40L ADP E21 LP840 N80	LED 4000K 4000 LUMENS 31W	UNV	
GE	SAME AS TYPE A EXCEPT ADD 1400 LUMEN BATTERY PAK					
H	6" DOWNLIGHT RETROFIT, LED, 4000K, 2000 LUMENS, DIMMING	LITHONIA	LDNRV 4020 LRBAR LSS MVOLT E21	LED 4000K 2000 LUMENS 23W	UNV	
J	3" LINEAR EXTERIOR FIXTURE, LED, 4000K, DIMMING, FORWARD THROW	SPI LIGHTING	SEW12145 120-277 4000K DF BRK	LED 4000K 2000 LUMENS 21W	UNV	
K	WAL PAK, LED, 4000K, 3000 LUMEN, FORWARD THROW	LITHONIA	ARC1 LED P3 40K MVOLT E4WH DLBLD	LED 4000K 3000 LUMENS 20W	UNV	
LE	DECORATIVE PENDANT, LED, 4000K, DIRECT/INDIRECT LIGHTING, DIMMING, CABLE MOUNT	LITE CONTROL	33LCR30 PID C14C1 4K1075 D20R23D01UNC	LED 750 LUMEN UP 2000 LUMEN DN 2300 LUMEN RING	UNV	120
M	DECORATIVE PENDANT, WHITE GLASS, 13W GU24 LAMP	LITHONIA	11994 GW	LED 4000K LAMP 13W	UNV	120
AL	ALARM LIGHT	ALERTUS		LED	120	
BL	BLUE LIGHT	ALERTUS		LED	120	

EQUIPMENT COORDINATION SCHEDULE																		
TAG	DESCRIPTION	HP / KW	MCA MOCP RLA/FLA	VOLT	CONDUCTORS			CONDUIT	LOCATION	PANEL	BREAKER	STARTER			NOTE			
					PH	N	GND					TYPE	FURNISHED BY	TYPE		FURNISHED BY		
AHJ-4	AIR HANDLER UNIT		50 MOCP	208/3	#6	N	#10	1"	EXTERIOR	H	50/3	VFD	MFG	MFG	VFD	MFG	MFG	2
PE-1	POWERED EXHAUST	1 HP	14.4 MOCP	208/3	#12		#12	3/4	EXTERIOR	H	15/3	VFD	MFG	MFG	VFD	MFG	MFG	3
EF-1	EXHAUST FAN	1/4 HP	5.8 FLA	120	#12		#12	3/4	SEE PLAN	G	20/1	INT	MFG	MFG	INT	MFG	MFG	
EF-2	EXHAUST FAN	1/4 HP	5.8 FLA	120	#12		#12	3/4	ROOF	F	20/1	INT	MFG	MFG	INT	MFG	MFG	
CUH-1	CABINET UNIT HEATER	1/15 HP	0.45 A	120	#12		#12	3/4	200F	SALVAGE	20/1	INT	MFG	MFG	INT	MFG	MFG	
CP-1	CIRC. PUMP	1/20 HP	0.8 FLA	120	#12		#12	3/4	SEE PLAN	SEE PLAN	20/1	NF	EC	EC	NF	EC	EC	1
WH-1	HEAT HEATER	2x4500W		208/1	#4		#10	1 1/4"	117	B	60/2	NF	EC	EC	NF	EC	EC	
WH-2	HEAT HEATER	2x4500W		208/1	#4		#10	1 1/4"	221A	J	60/2	NF	EC	EC	NF	EC	EC	

GENERAL NOTES:  
A. COORDINATE INSTALLATION OF MOTORS WITH MECHANICAL CONTRACTOR. REFER TO MECHANICAL DRAWINGS.  
B. CONTROL WIRING SHALL BE BY MECHANICAL CONTRACTOR UNLESS NOTED OTHERWISE.  
C. MCA=MINIMUM CIRCUIT AMPS; MOCP=MINIMUM OVER CURRENT PROTECTION; FLA=RATED LOAD AMPS; FLA=FULL LOAD AMPS  
D. EC=ELECTRICAL CONTRACTOR; MC=MECHANICAL CONTRACTOR; INT=INTEGRAL TO UNIT

MOTOR SCHEDULE NOTES:  
1. PROVIDE HP RATED TOGGLE SWITCH AT UNIT AS DISCONNECTING MEANS.  
2. SINGLE POINT POWER CONNECTION.  
3. UNIT SHALL BE FIELD WIRED TO AHJ-4 BY EC. UNIT PROVIDED WITH INTERNAL 12AMP FUSE. COORDINATE WITH HVAC CONTRACTOR.

Item	Elec Contractor (MEP Documents)	By Owner	Notes
Data system			
IT Server Equip		x	Existing system in place
Rack		x	Utilize existing data racks
Patch panels		x	
Patch cords		x	taken care of by school IT
WAP		x	Cabling to be provided by EC
Computers		x	
Monitors/projectors		x	EC to provide power and pathway for owner provided HDMI cable to the teacher station, or as shown on plans.
Printers		x	
Fax machines		x	
Phones		x	
Cabling, labeling, Terminate and Test	x		Cabling would be Cat6a
IT system setup, start-up and commissioning	x		
Conduit for cabling	x		
Power to WAP & Data Racks	x		
Security System			
Cameras		x	Camera to be provided by the school district
Cabling, labeling, Terminate and Test	x		Cabling to be data cabling, POE
Conduit for cabling	x		
Security system setup, start-up and commissioning	x		
Door Access			
Door contacts			Much of the door access system would be in the hardware specs by the architect
Card reader	x		HID Proximity Reader
Power supplies	x		
Cabling	x		
Conduit and box	x		
Door Access system setup, start-up and commissioning	X		Ccure 9000 door access system (Provided by EC). Card Access system to be programmed by Johnson Controls, - Duluth Branch
Telephone system			
Headend Equipment		x	
Phones (Hand Sets)		x	
Fax machines		x	
Equip install, System setup, testing and terminations		x	
Patch cords		x	
Cabling	x		Cabling to be data cabling
Conduit and box	x		
Clocks/Bell System			
Headend Equipment		x	Existing wireless clock system provided by the owner
Room Clocks		x	



Consultant:



MEP PROJECT# H08.20.02

Project Title: **WITC - SHELL LAKE CAMPUS  
HEALTH EDUCATION CENTER**  
Project Location: **505 PINE RIDGE DR  
SHELL LAKE, WI**  
Sheet Title: **FIRST FLOOR SYSTEMS PLAN**

HSR Project Number: **20022-1**  
Project Date: **MARCH 4, 2021**  
Drawn By: **CJS / LA**

Key Plan:

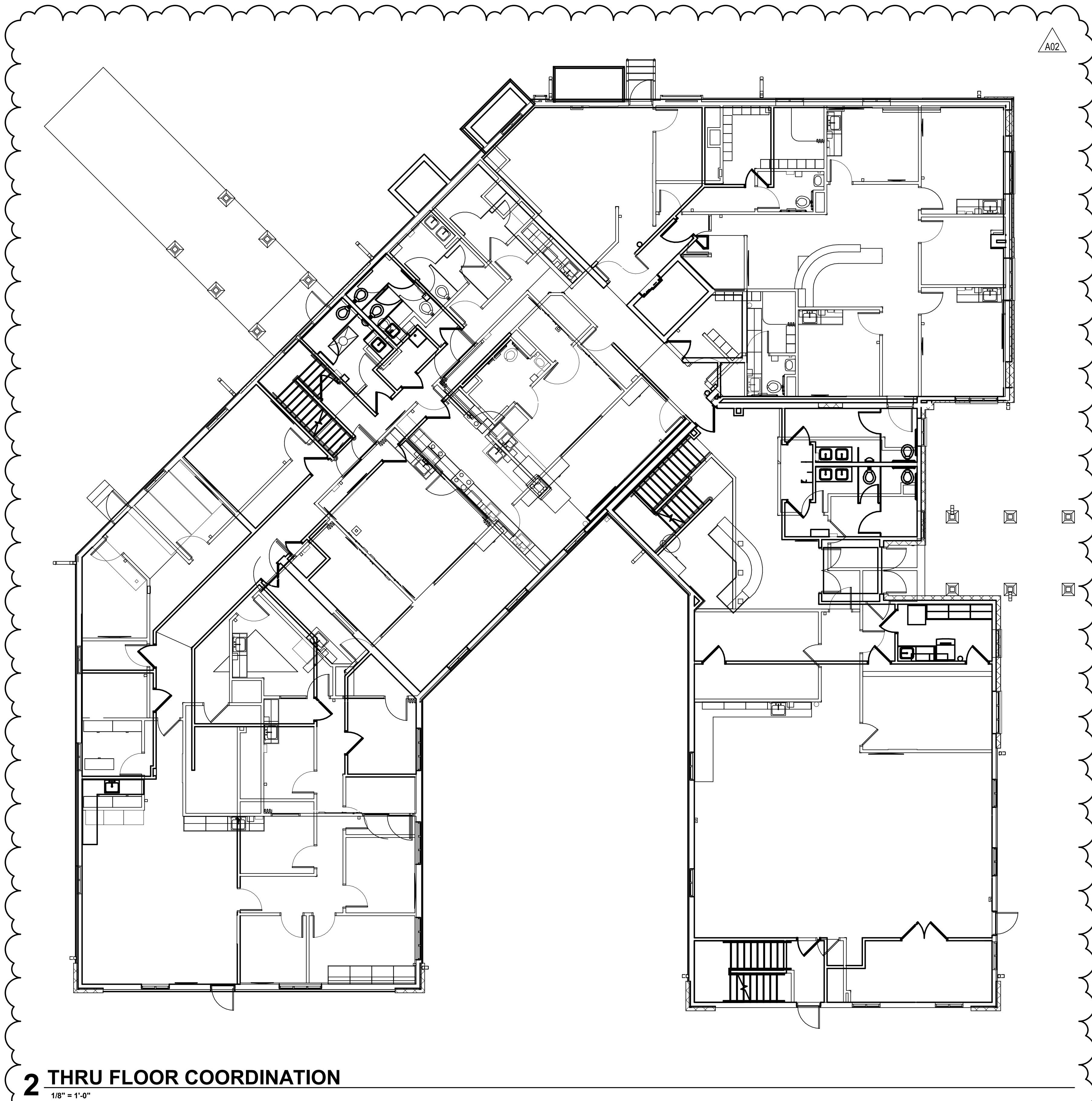
**BID  
DRAWINGS**

No.	Description	Date
A02	ADD #2	03/25/21

Graphic Scale: **VARIES**

Last Update: **3/24/2021 7:26:33 AM**

**E131**



- KEYED NOTES**
- 1 PROVIDE 120V CONNECTION FOR ALARM BELL
  - 2 DOOR SHALL HAVE PANIC HARDWARE
  - 3 DATA RACKS LOCATED IN ROOM 125
  - 4 EC SHALL CONTRACT "ICP" FOR THE DOOR ACCESS AND INTRUSION DETECTION SYSTEMS. SYSTEM SHALL BE "OCURE 9000". COORDINATE LOCATION WITH GC AND OWNER
  - 5 AREA TO BE STONE VENEER. ELECTRICAL CONTRACTOR SHALL PROVIDE NEW BACKBOXES FOR ALL DEVICES ON THIS WALL. EC SHALL ADD MOUNTING PLATE/SPACER AS REQUIRED TO BRING DEVICES FLUSH WITH STONE VENEER.
  - 6 MONITOR IS ROUGH-IN ONLY AT THIS LOCATION.

- GENERAL NOTES**
1. COORDINATE EXACT LOCATIONS OF DEVICES SHOWN WITH OTHER EQUIPMENT. COORDINATE EXACT LOCATIONS OF CEILING MOUNTED DEVICES WITH LIGHTS, HVAC EQUIPMENT, AND OTHER DEVICES.
  2. EXISTING FIRE ALARM SYSTEM IS SIMPLEX. FIRE ALARM DEVICES ARE SHOWN FOR DESIGN INTENT ONLY. PROVIDE DEVICES AND QUANTITIES NEEDED TO MEET APPLICABLE CODE. PROVIDE ALL DEVICES AND HARDWARE NECESSARY FOR A COMPLETE AND OPERABLE SYSTEM PER CODE. DEVICES MAY BE CEILING OR WALL MOUNTED WHERE THE LOCATION IS APPROVED BY THE LOCAL AHJ.
  3. INTERCOM AND DATA DEVICES PROVIDED BY EC.
  4. COORDINATE WITH MECHANICAL CONTRACTOR AND PROVIDE ALL RELAYS, CONNECTIONS, AND ALL DEVICES NECESSARY TO INTERLOCK EXHAUST FANS, DAMPERS, ETC WITH PROPER CONTROL DEVICES.
  5. COORDINATE EXACT LOCATIONS OF MECHANICAL EQUIPMENT WITH MECHANICAL CONTRACTOR.
  6. ALL EXISTING DATA OUTLETS THAT ARE TO REMAIN, SHALL BE RE-RUN WITH CAT 6. ADDITIONALLY THE EXISTING OUTLET SHALL BE REPLACED WITH NEW.

- EQUIPMENT NOTES**
- ALL COMMUNICATION OUTLETS FINAL DATA/VOICE/VIDEO COUNTS CAN BE SUPERSEDED BY IT. DEPT. COORDINATE WITH OWNER.
- CONTROL PANEL OPTIONS:**  
 16 DOOR SET UP: PSX-WISU16-E8S: PSX 150x250W POWER SUPPLY/BATTERY CHARGER. WIRED FOR 16 READER ULTRA WALL MOUNT 36x20 ENCLOSURE WITH 2 POWER SUPPLIES. W/ LOCK AND TAMPER. PRE-WIRED FOR ULTRA GCM AND 2 ULTRA ACM'S. INCLUDES 2 DBP AND LOW BATTERY DISCONNECT SWITCHES. FITS (4) AHR BATTERIES. MUST INCLUDE BOARDS FOR ABOVE CONTROL PANELS. GCM BOARD: USTAR-GCM
- 8 DOOR SET UP: PSX-WISU08-E4S: PSX 75x150 W POWER SUPPLY/BATTERY CHARGER. WIRED FOR 8 READER ULTRA WALL MOUNT 24x20 ENCLOSURE WITH 2 POWER SUPPLIES. W/ LOCK AND TAMPER. PRE-WIRED FOR ULTRA GCM AND 1 ULTRA ACM. INCLUDES 1 DBP AND LOW BATTERY DISCONNECT SWITCHES. FITS (3) 9 AHR BATTERIES. ACM BOARD: USTAR-ACM
- MULLION READER: HID MINIPROX MOUNTY PROXIMITY CARD READER - MODEL 5365 WIEGAND INTERFACE, PART # 5365GPOD - REGULAR READER, PART # 5365GNDH
- 1 AI PHONE
  - 2 CARD READER DISARM CONTROL PANEL



Consultant:



MEP PROJECT# H08.20.02



**1 FIRST FLOOR BLUE LIGHT SYSTEM**  
1/8" = 1'-0"



**2 SECOND FLOOR BLUE LIGHT SYSTEM**  
1/8" = 1'-0"

**GENERAL NOTES**

- ALL BLUE LIGHTS SHALL BE NEW. BLUE LIGHTS ARE BY ELECTRICAL CONTRACTOR.
- EXISTING BLUE LIGHTS SHALL BE TURNED OVER TO OWNER. OWNER HAS RIGHT OF REFUSAL.

**Project Title:** WITC - SHELL LAKE CAMPUS  
HEALTH EDUCATION CENTER  
**Project Location:** 505 PINE RIDGE DR  
SHELL LAKE, WI  
**Sheet Title:** BLUE LIGHT ALERT SYSTEM

**HSR Project Number:** 20022-1  
**Project Date:** MARCH 4, 2021  
**Drawn By:** Author

**BID DRAWINGS**

No.	Description	Date
A02	ADD #2	03/25/21

Graphic Scale: VARIES

Last Update: 3/24/2021 7:26:39 AM

**E133**